

# ***IPMS***

## ***JUDGING 101***

***What do IPMS Judges look for?***

## *The Goal*

- **Use of Basic building techniques and consistency in the overall presentation**
- **The entire category is evaluated at the same time and place by the same group of judges**
- **Each entry in the category individually**
- **1<sup>st</sup>, 2<sup>nd</sup> & 3<sup>rd</sup> place are awarded to the best entries built by 3 different modelers**  
If there were only two entries in a category they would place 1<sup>st</sup> & 2<sup>nd</sup>, regardless of build quality
- **A modeler can only place once within a specific category** (*No Sweeps*)
- **The system must be supportable based on the available Time frame & Awards**

### *Typical entry counts*

<b>Local and regional shows:</b>	<b>200 – 800</b>
<b>AMPS Nationals:</b>	<b>500 – 600</b>
<b>IPMS UK Nationals:</b>	<b>600 – 800</b>
<b>IPMS USA Nationals</b>	<b>2500 - 3500</b>

## *What are the Basic qualities we look for*

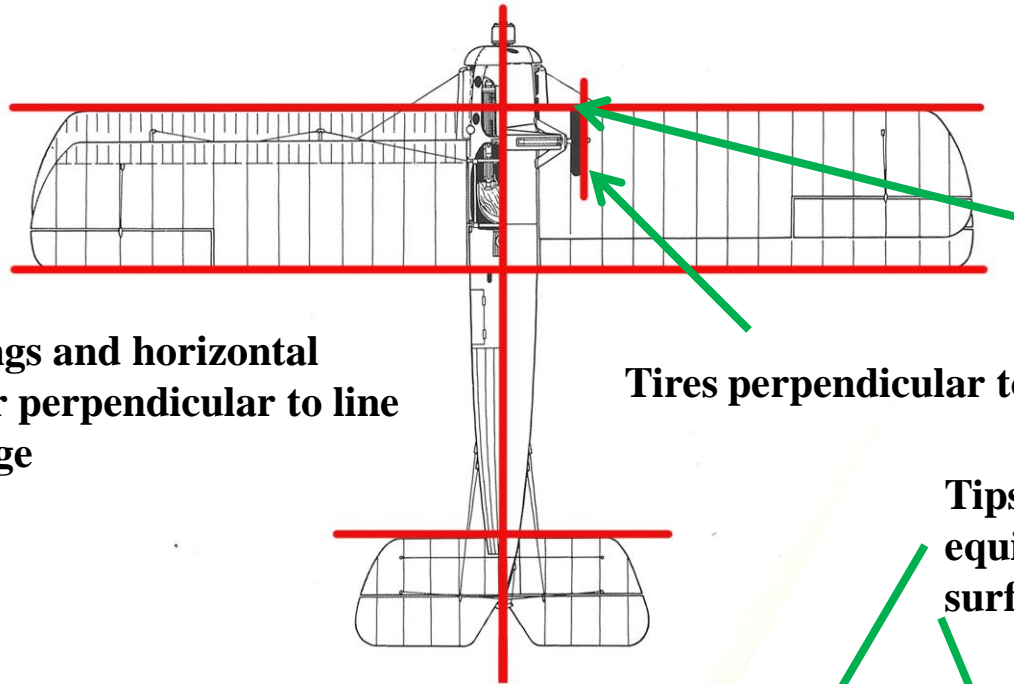


**In any given category, typically about 85% of the entries will be eliminated on the *FIRST* cut due to basic construction errors.**

- **Flawed alignment of landing gear, wings, wheels, treads etc.**
- **Rough or unevenly finished paint**
- **Silvered Decals**
- **Clouded clear parts**
- **Poorly finished seams**
- **Poorly re-scribed panel lines**

# Alignment of Parts

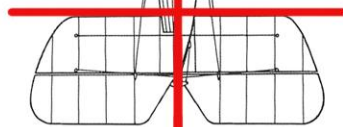
Compare model up to an imaginary grid (*think Tic-Tac-Toe*) from front, rear and overhead to check if everything is square or symmetrical.



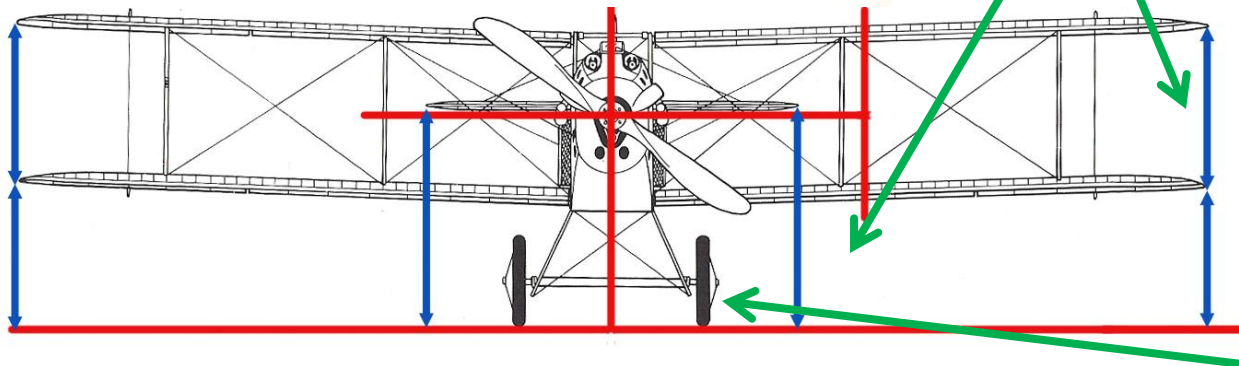
Leading edge of tires equidistant on both sides from leading edge of wing

Both wings and horizontal stabilizer perpendicular to line of fuselage

Tires perpendicular to wing

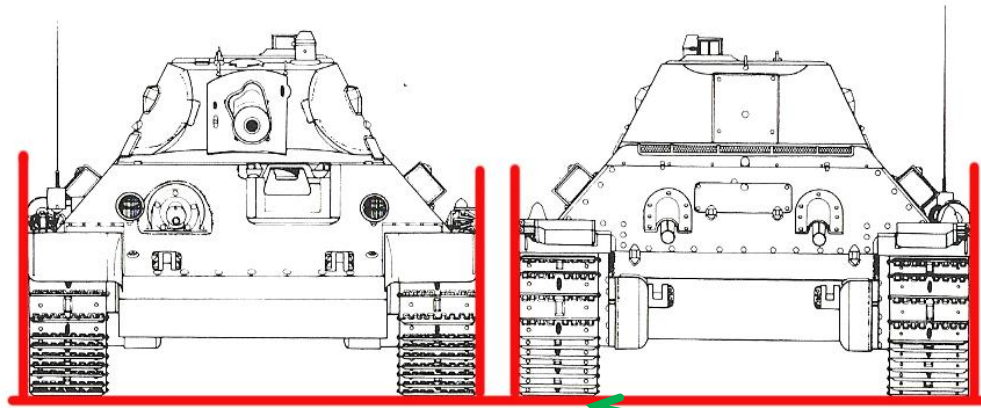


Tips of wings and horizontal stabilizers equidistant from each other and flat surface on both sides of aircraft

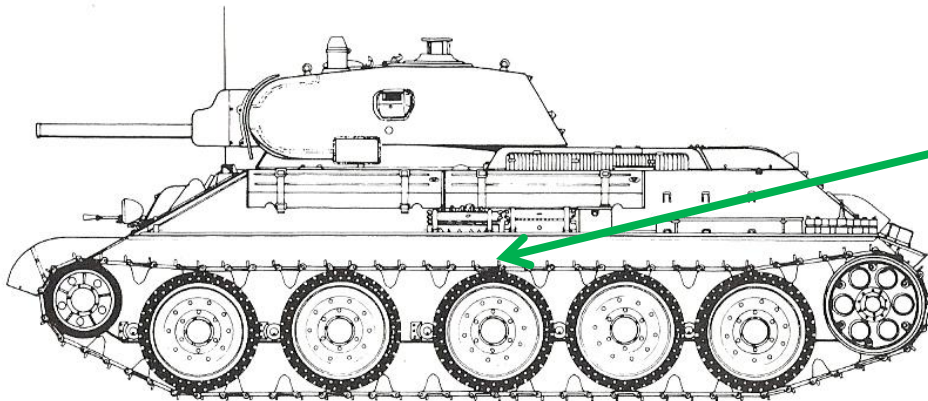


*Tip*  
▪ A simple adjustable sewing ruler is a big help!

Tires should be symmetrical on both sides



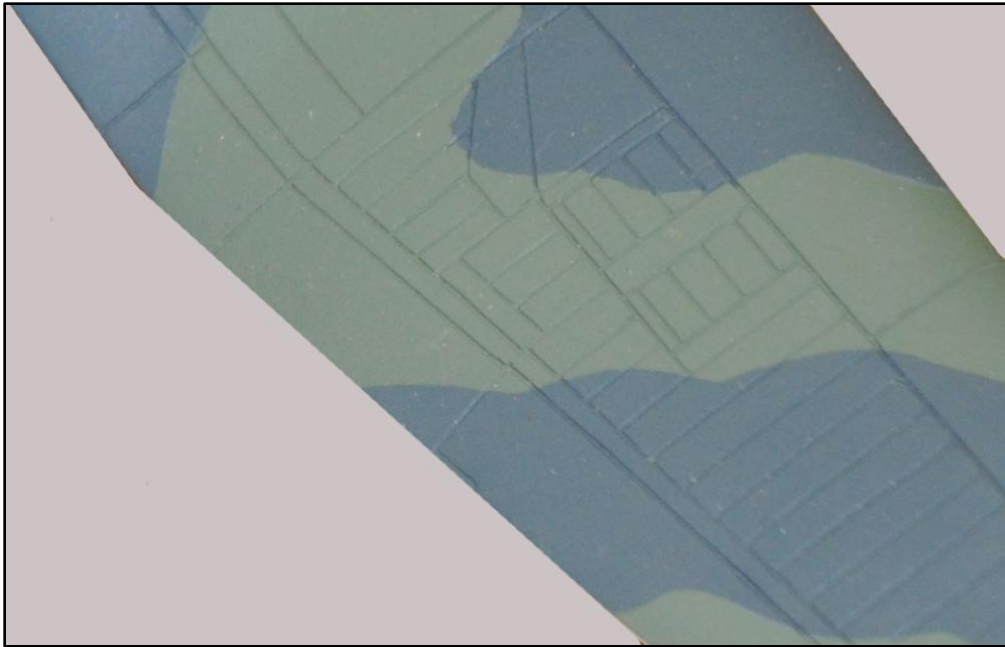
**Tracks perpendicular to and touching ground on both sides, front and rear**



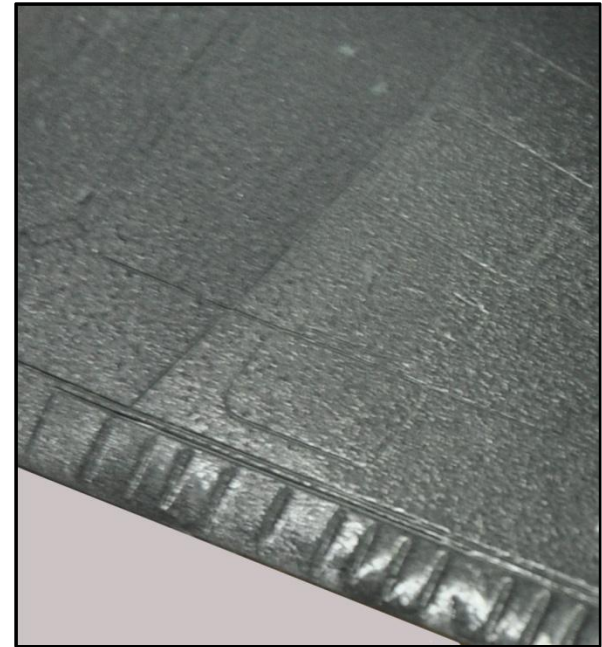
**Tracks touching top of road wheels at all points**

*Same rules apply to Automobiles, Motorcycles and Trucks*

## *Quality of Finish*



- **Smooth finish**
- **Consistently flat**

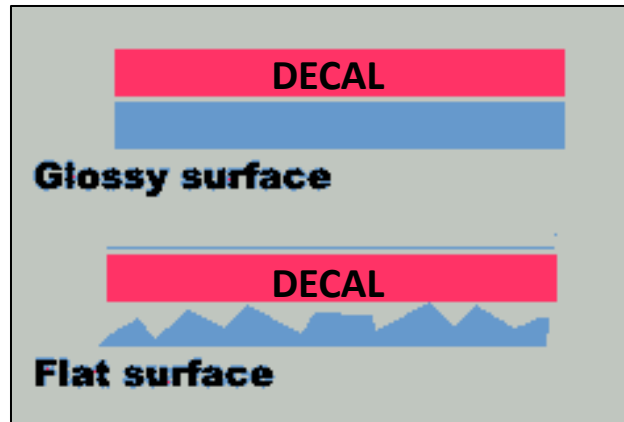


- **Pebbly Finish**
- **Inconsistent sheen**

## *Decal Silvering*



**Silvering**

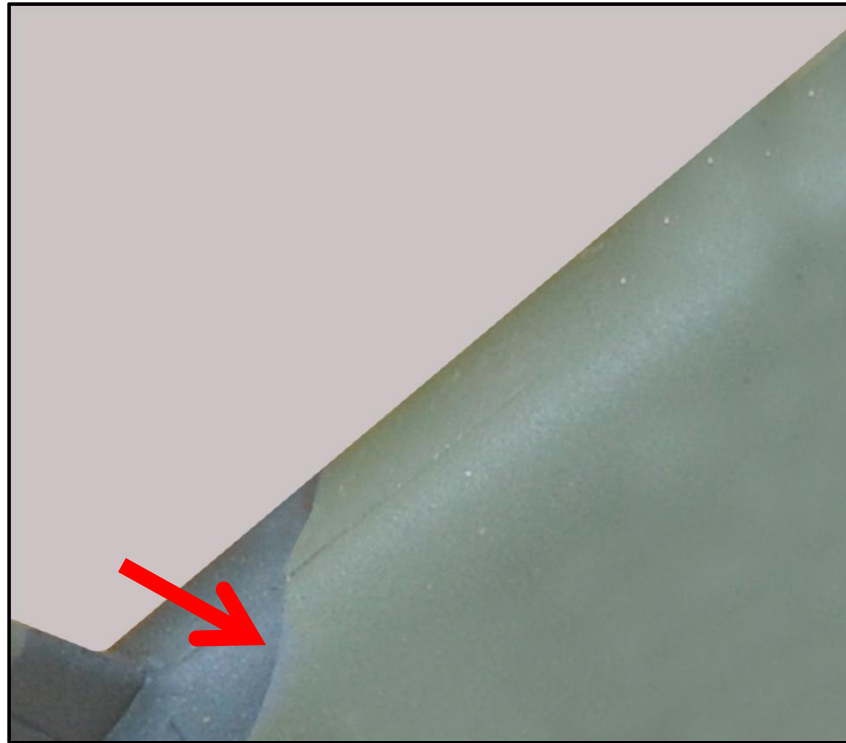


**No Silvering**

### *Tip*

- Air trapped under the decal when applied over a flat finish causes silvering.
- Apply decal over a gloss finish
- If silvering occurs, perforate with tip of a #11 blade and apply decal set solution

## *Seam Filling*



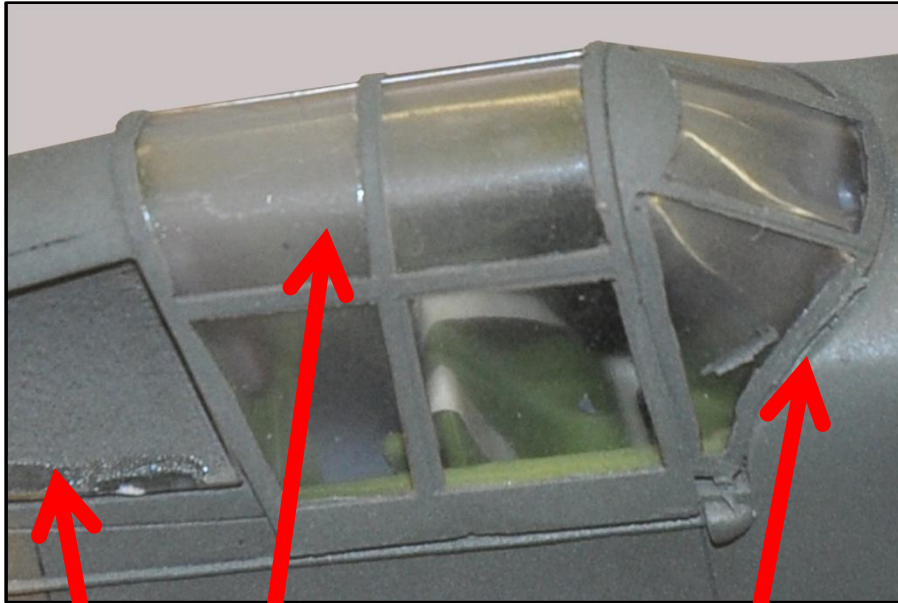
**Hint of a seam might be hard to see at a distance, but it is there!**

### *Tip*

- **One of the reasons judges use flashlights is to shine the light across a seam to make it easier to see.**



## *Clarity of Clear Parts*

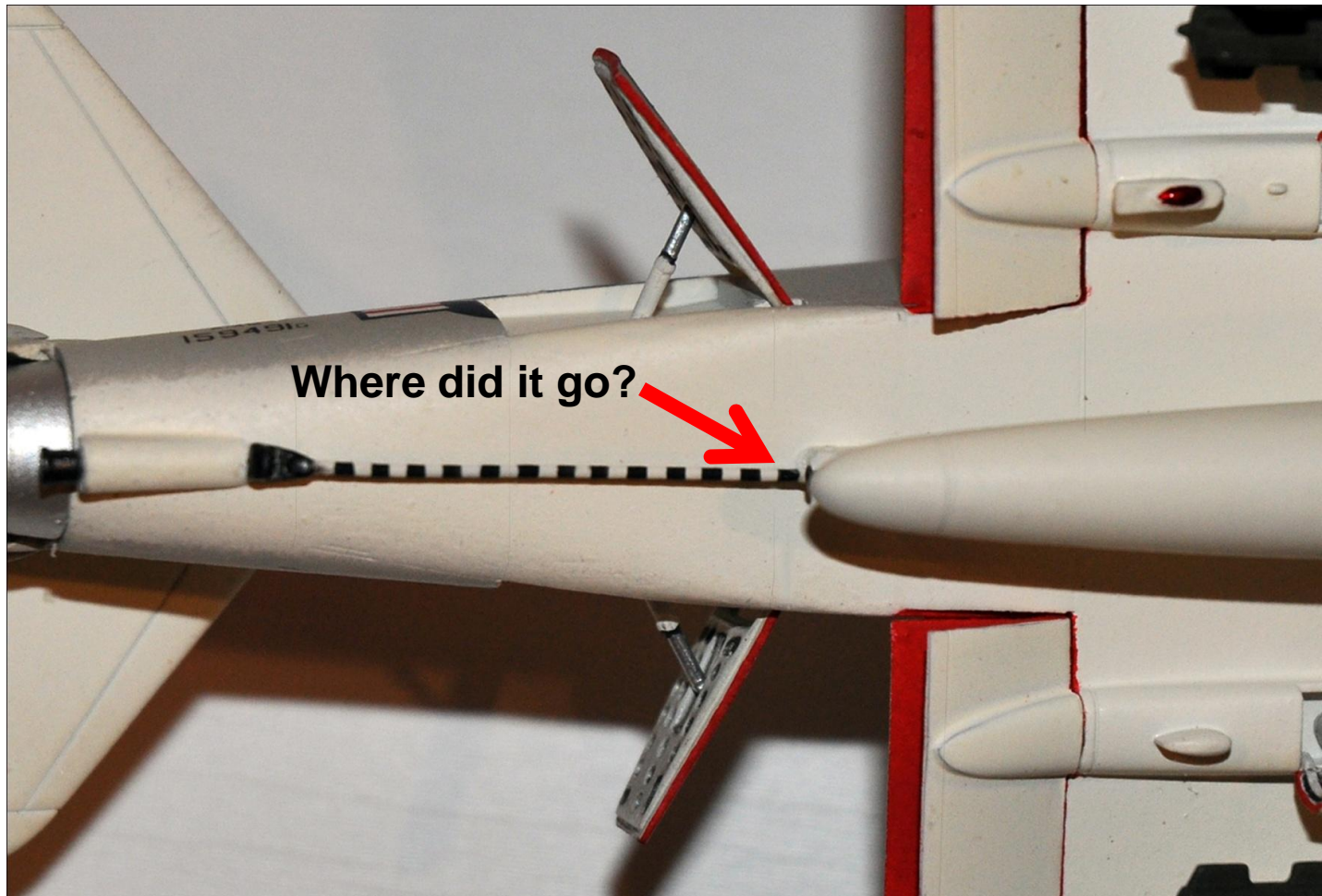


- Canopy fogged
- Glue behind rear window
- Windscreen not faired in cleanly



- Clear canopy
- Windscreen faired in cleanly

## *Poorly re-scribed panel lines*



### *Tip*

- Panel Lines can disappear during the seam filling/sanding process. If they do, rescribe with a sharp point

## *What About Dioramas, Vignettes and Figures?*

- **In addition to build quality, these classes require evaluation of other factors.**
- **For Dioramas & Vignettes the strength of the story line must be considered. What tells a stronger story, a squad of soldiers hiding behind a brick wall or that same squad of soldiers liberating prisoners from a POW camp?**
- **Depiction of an actual historical event is also a plus.**
- **For Figures the realism of the facial and uniform shading needs to be evaluated.**

### *Tip*

- **Realistic painting of any figures used in a diorama must also be considered**



# Which Diorama tells a stronger story?



**Based on an actual event**



**Just a tank in a jungle landscape**



*Which figure is more realistic?*



## *Beyond the Basics*



## *Accuracy of Color & Markings*

- As stated earlier, because the primary criteria for evaluating a model is the quality of the construction, the accuracy or tone of the colors is only considered after the model has met that criteria.
- For instance it is not valid to state that the Olive Drab is bit too light because we all know that colors vary considerable based on exposure to the elements or means of application.
- Another example might be to disqualify an entry on the basis of an assumed knowledge of the colors used. While it is probably valid to say that WW2 PT boats were not painted pink, it is common knowledge that they were painted OD or gray in the Pacific and that some in the Mediterranean wore white and black stripes.

### *Tip*

- If there are things that are unusual for colors or markings used on the model it's important to provide reference materials



## *Aftermarket Parts*

- **There are a vast selection of add on items that can be used to enhance the model. Photo Etch or Resin detail sets and decal sheets are some of the more common ones.**
- **If the builder enhances the model with extra detail parts it is important that they be used the same attention to the basics as the rest of the model. In fact, poor use of aftermarket parts can sometimes detract, rather than enhance, the model**
- **If aftermarket decal sheets are used documentation is a plus.**

### *Take Note*

- **As of the 2022 National Show IPMS/USA modified the Out of Box categories that had been in place for many years due to the increased inclusion of resin and Photo-Etch parts in many current kits. This created confusion during the judging because it was not always clear which parts were kit supplied and which were aftermarket, even though kit instructions were mandatory for these entries.**
- **The new criteria called Basic Kit Build (BKB) which replaces Out of Box (OOB) Currently BKB is only mandatory for National contests, Local and Regional shows may still use either system at their discretion.**
- **OOB – Builder may use any parts included in the basic kit, regardless of medium. Instructions must be provided. Antennas, rigging & simple seat belts are allowed.**
- **BKB – Builder may only use single medium kits. Even if a kit includes resin/PE that kit may NOT be entered in a BKB category. Instructions must be provided regardless. Antennas, rigging & simple seat belts are allowed if they show on instructions or box art.**



# *Judging Protocols*



# *Integrity of the Judges*

- Each judging team comprises three members who (*ideally*) come from different localities.
- Entrants names are not visible on the entry sheets, only numbers that reference a master list.
- Any hint of favoritism is cause for immediate and permanent dismissal from the Judging cadre. (*Yes, it has happened*)
  
- Another reason for the three judge teams, besides more eyes being better, is that it encourages an integrity “self check” within the team.
  
- Each judge signs the Category sheet so entrants can ask for a critique of their entry only. The judges will not compare an entry to any other in the category.
  
- An judge must never evaluate his own category. (*A judges name in a winners slot on the judging form is a dead giveaway that something is amiss!*)

## *Picking up a model*

- **For years judges used dental mirrors to look at the underside of a model to avoid picking it up. It was discovered that not only was it dark under there, but more damage was being done by the mirror than if the judge just picked it up carefully for a look.**
- **Entries normally do not get picked up. If, after an initial visual sweep of the category, some entries have grossly evident construction problems, the judges will go no further. Once the model makes it to the final cut, the judges may pick it up to look underneath, but only to break a tie.**
- **On the very rare occasion that damage is inadvertently caused by a judge, The judge signs the entry sheet, explaining that the damage did not have any bearing on the outcome. The Chief judge is also notified of the damage.**

### *Tip*

**If some special care in handling a model is needed it may be noted on the entry form. Be sure to look for this and exercise care is a base mounted model is picked up!**

## *What's the best way to improve your modeling skills?*

- **The next time you attend a contest volunteer to judge.**
- **Modelers who have not judged before are called apprentice judges. You will be placed with one of the judging teams and, while you won't have a vote in the outcome, you are expected to make observations and comments about the entries. In fact many times the apprentice judge will notice things an experienced judge won't. The more eyes the better!**
- **Listening, observing and learning from your team will be the best way to improve your skills.**
- **Once you have acted once in an apprentice capacity, you are considered a fully qualified judge with all the associated rights and responsibilities.**

*Note: Even if you have judged at local or regional shows, you are still considered as OJT for your first National contest.*

*That's All Folks !*

