

MAKING YOUR OWN CUSTOM DECALS

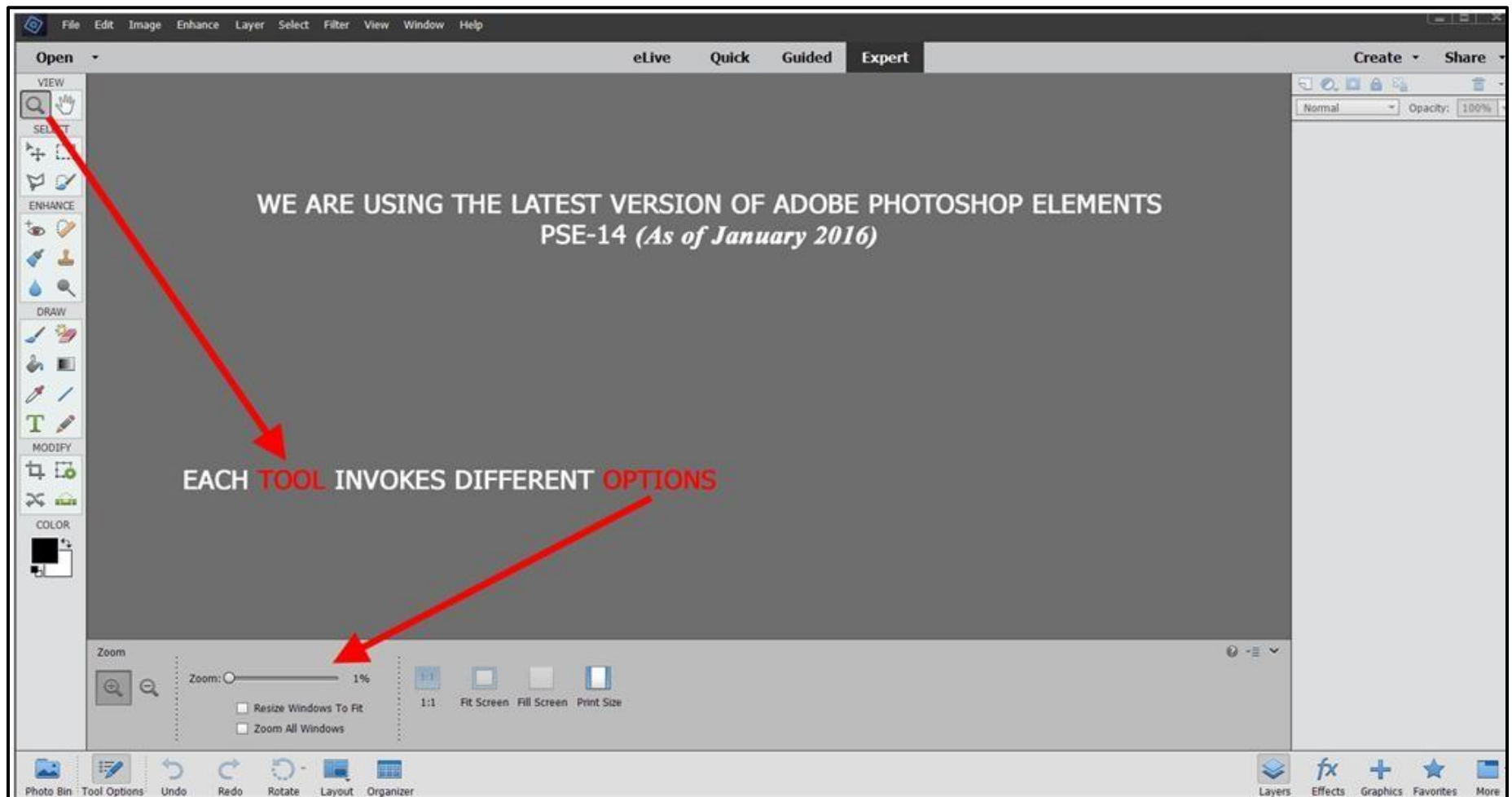
Mike Fleckenstein

REASONS TO MAKE A CUSTOM DECAL

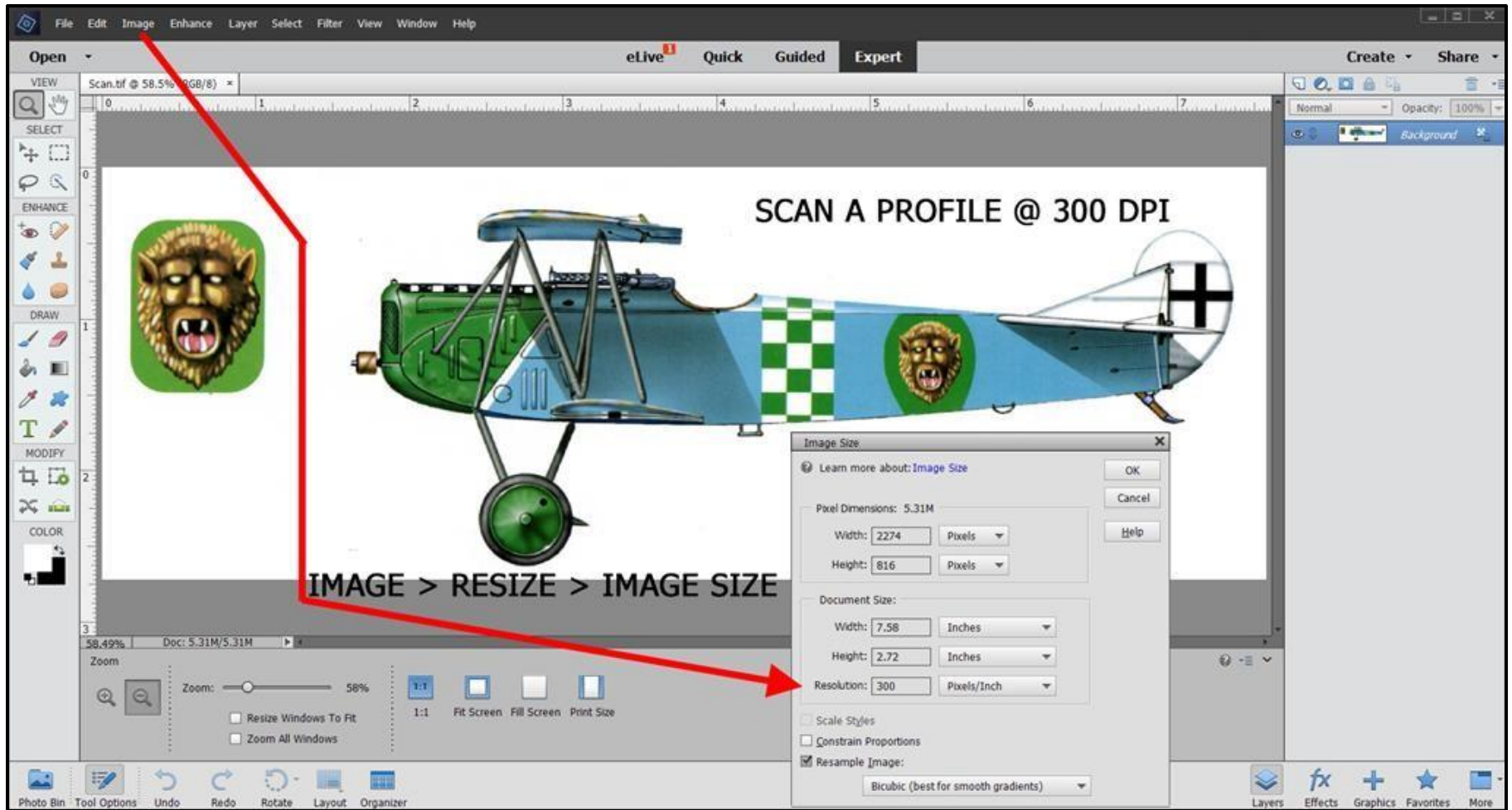
- You have seen a marking on a photo of something you would like to model that is not available commercially.
- You have a decal in a scale other than the one you need
- Using this procedure you can scan, scale and print the marking you need on an ink-jet or laser printer
- You can also search the web for the marking you need and use that as the source for your custom decal.

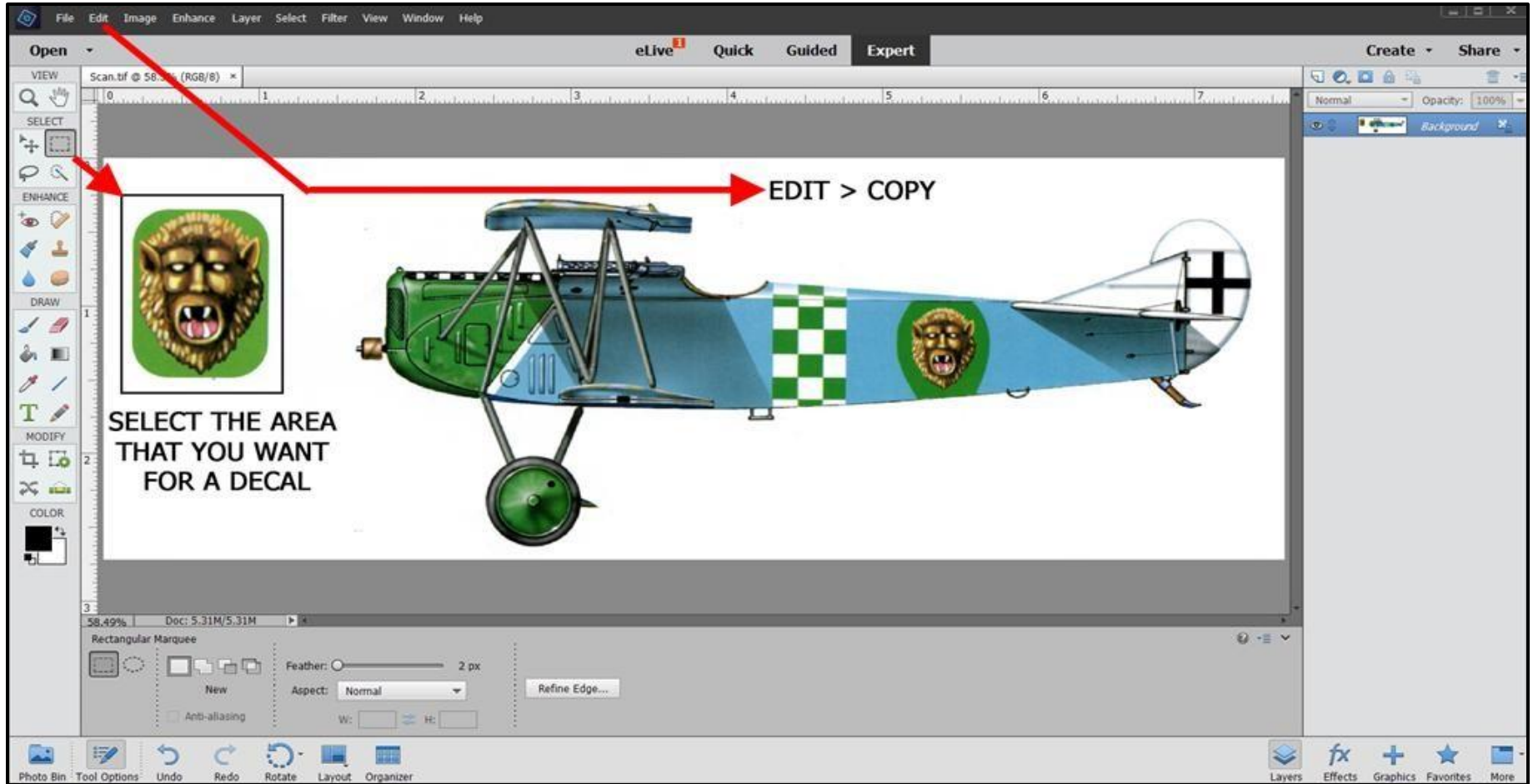
A WORD TO THE WISE

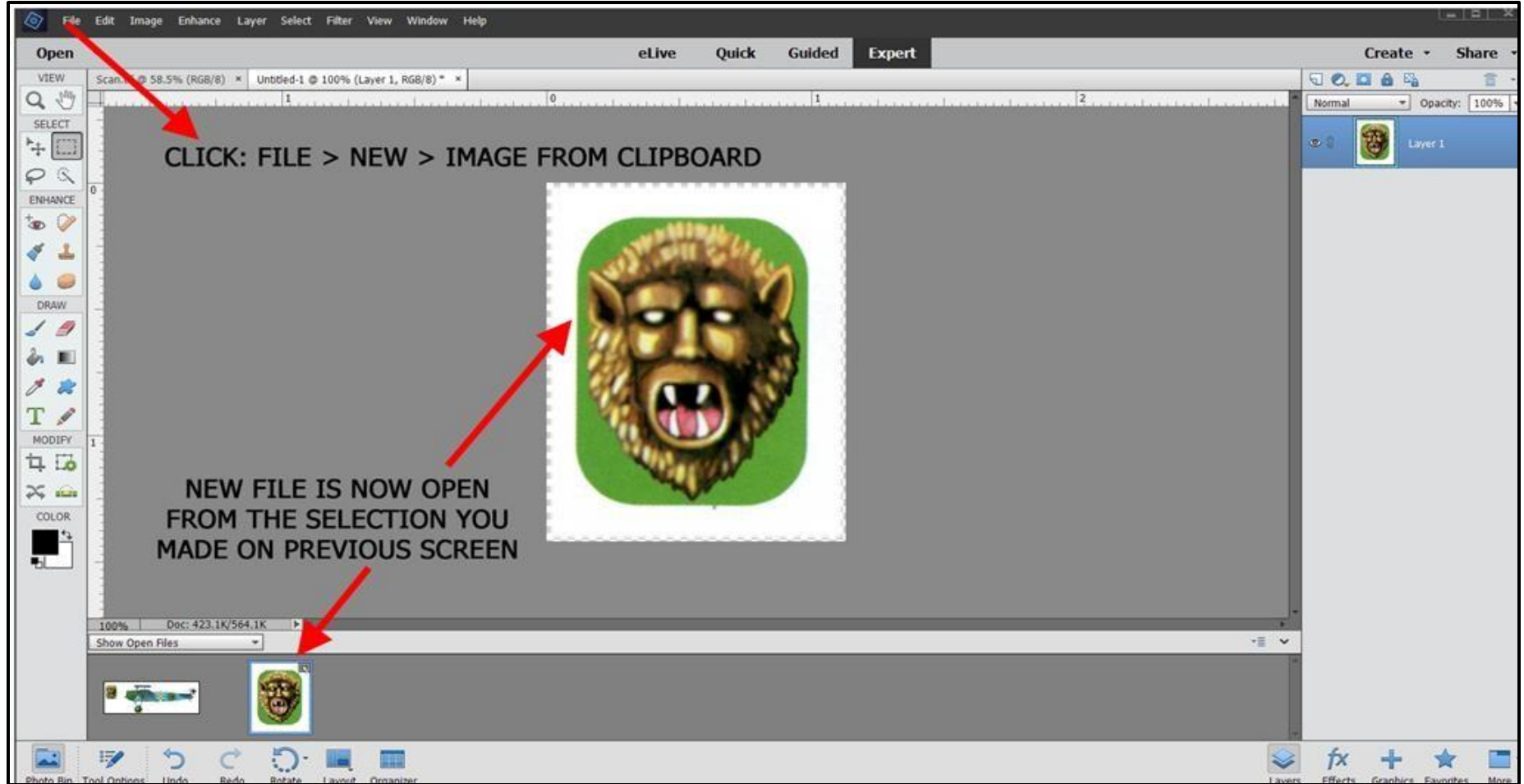
- We will be using Adobe Photoshop Elements[®] to create our decal. You can also use Adobe Photoshop CC[®] or almost any other graphics program.
- Save the file frequently during the procedure. If you make a mistake or need to take a break you can always revert to the previously saved file ,rather than start from scratch.

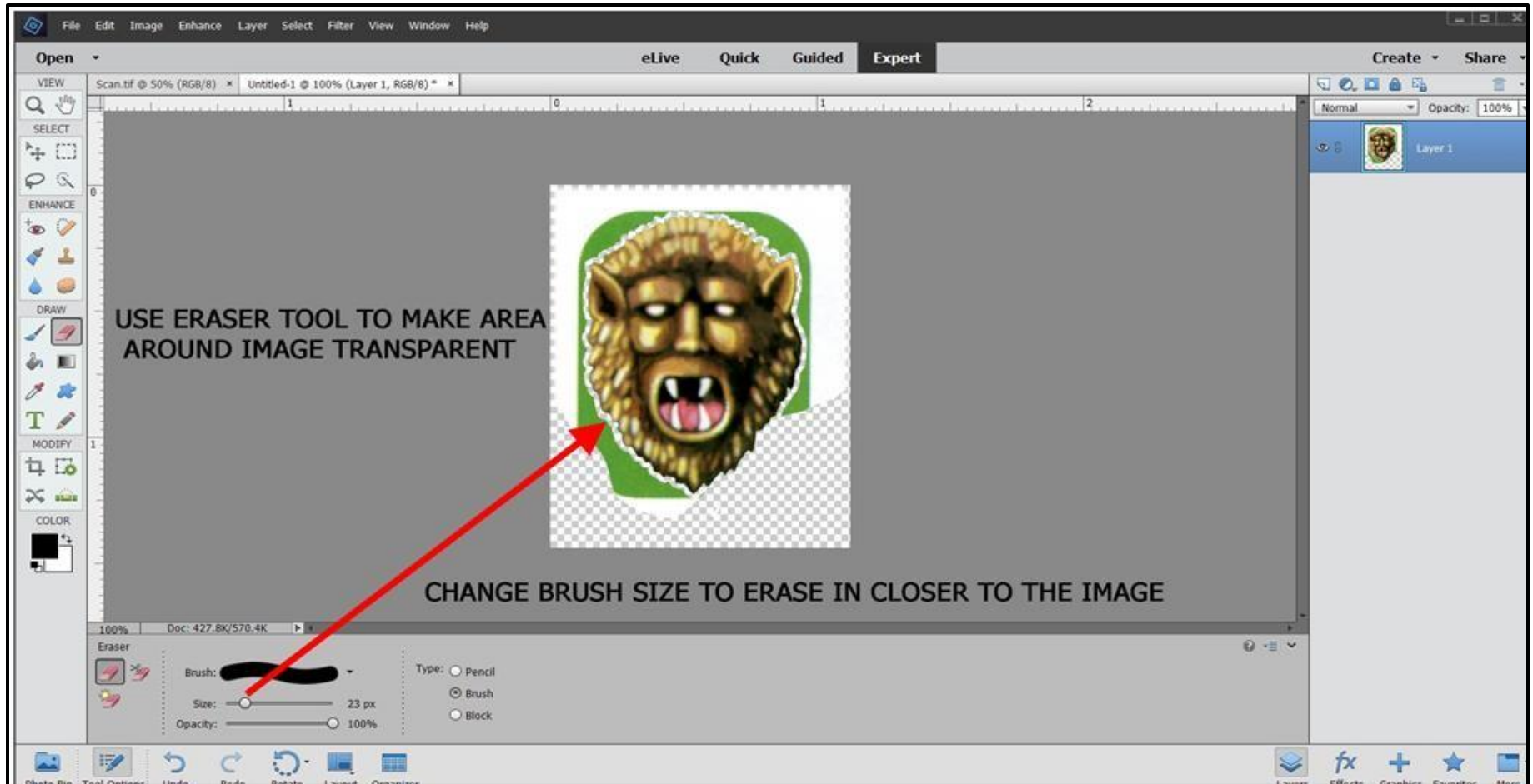


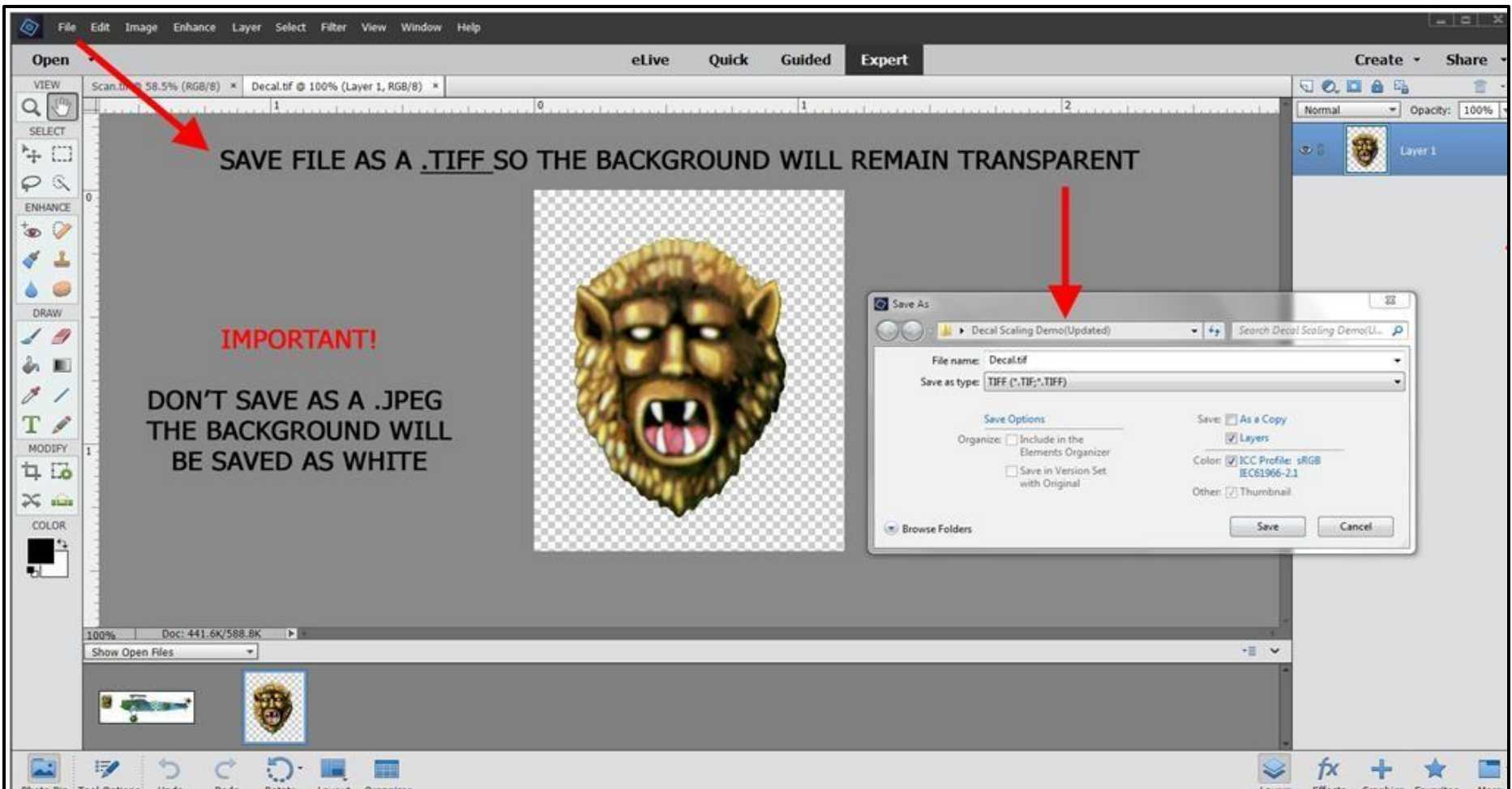
As an example, we'll use a color profile from a Squadron Signal in Action book











SAVE FILE AS A .TIFF SO THE BACKGROUND WILL REMAIN TRANSPARENT

IMPORTANT!

DON'T SAVE AS A .JPEG
THE BACKGROUND WILL
BE SAVED AS WHITE

Save As

File name: Decal.tif

Save as type: TIFF (*.TIF;*.TIFF)

Save Options

Organize: Include in the Elements Organizer
 Save in Version Set with Original

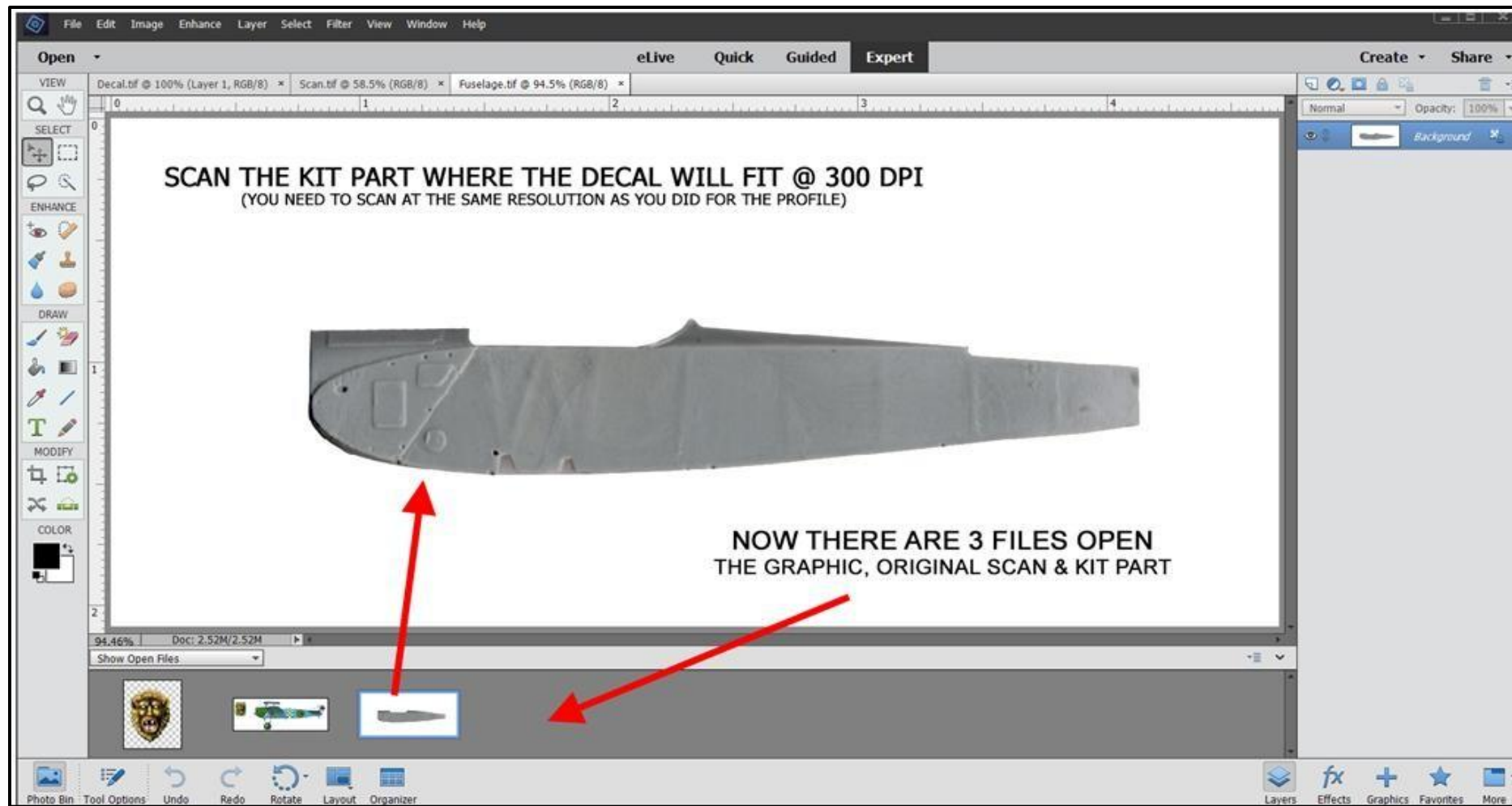
Save: As a Copy
 Layers

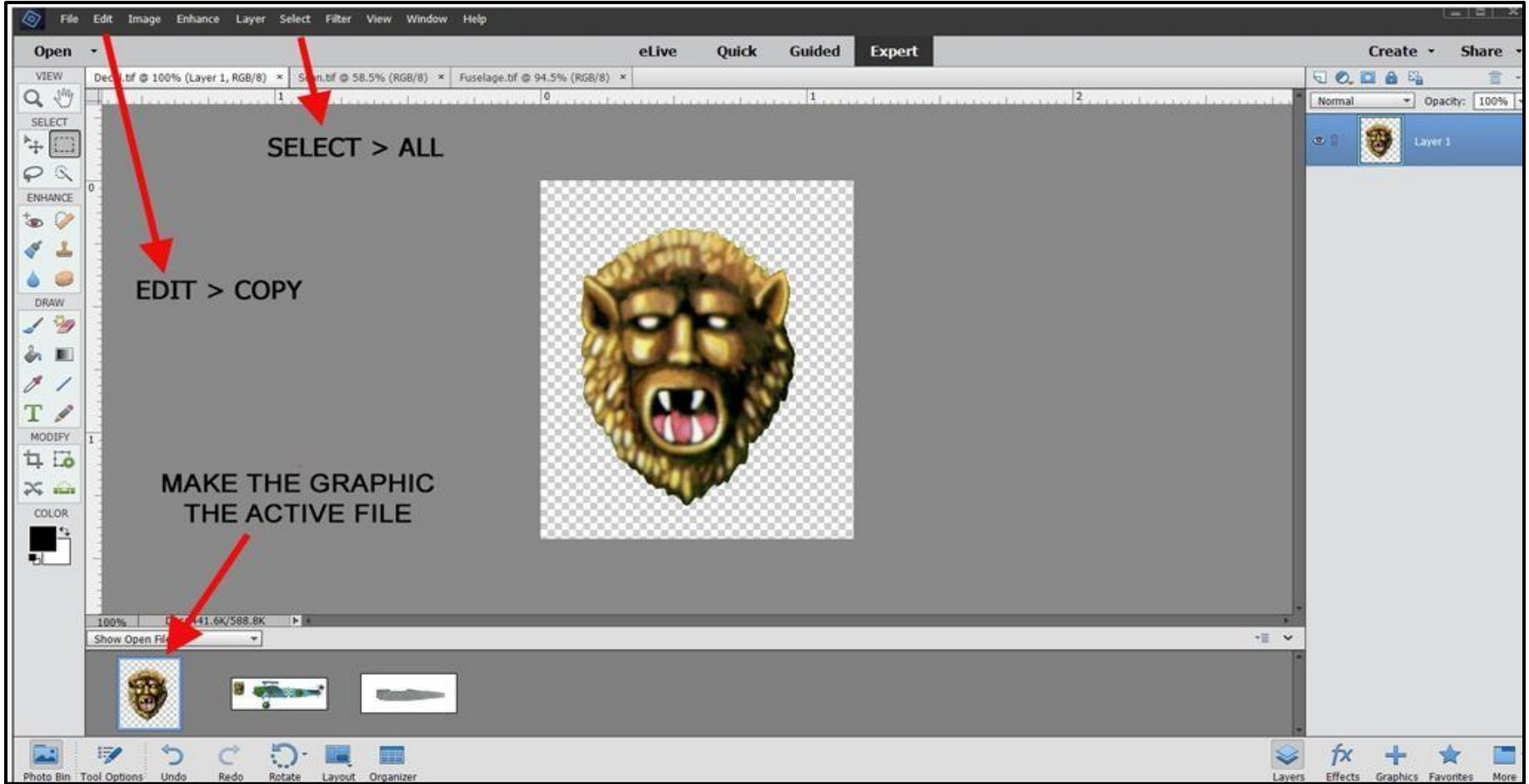
Color: ICC Profile: sRGB IEC61966-2.1

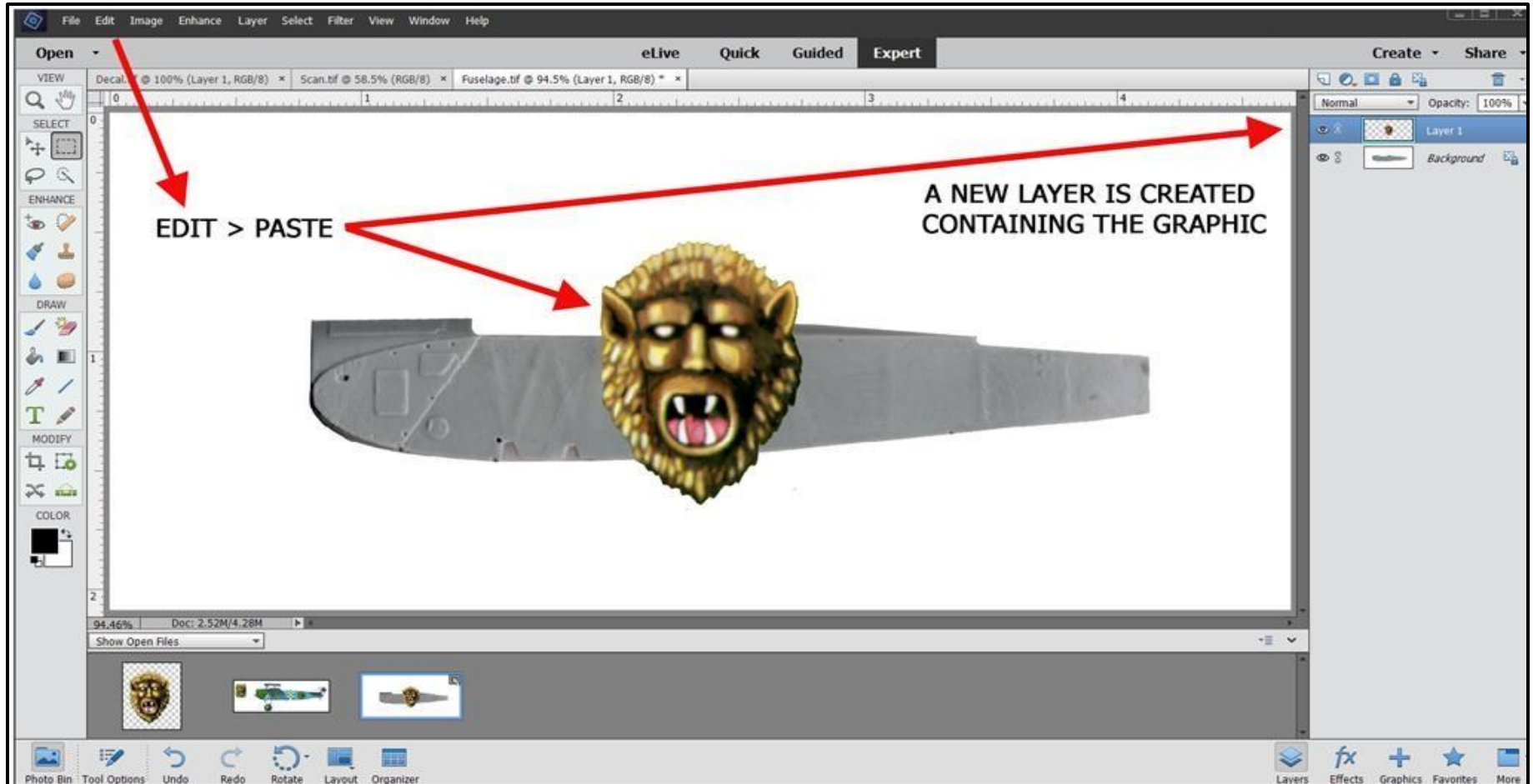
Other: Thumbnail

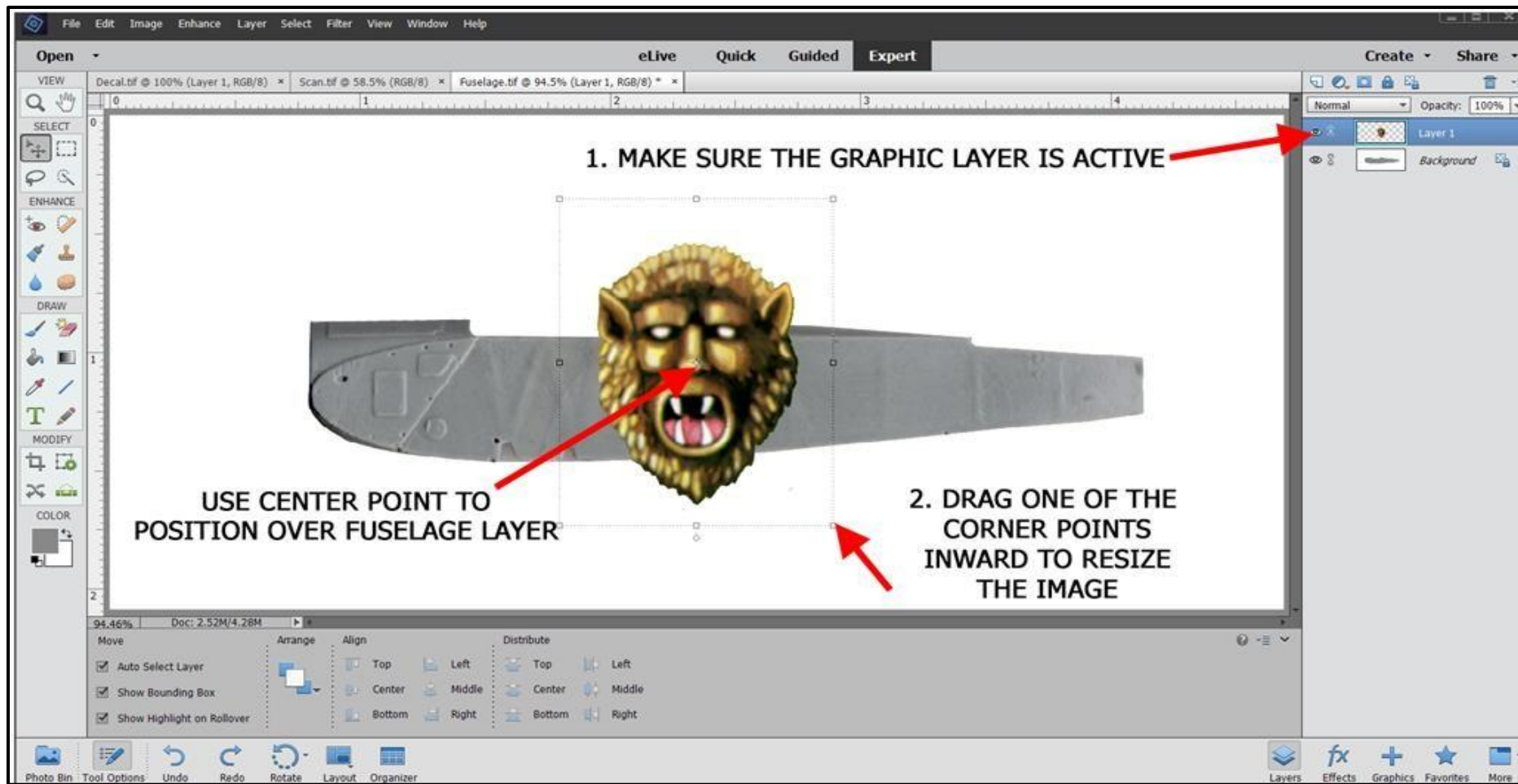
Browse Folders

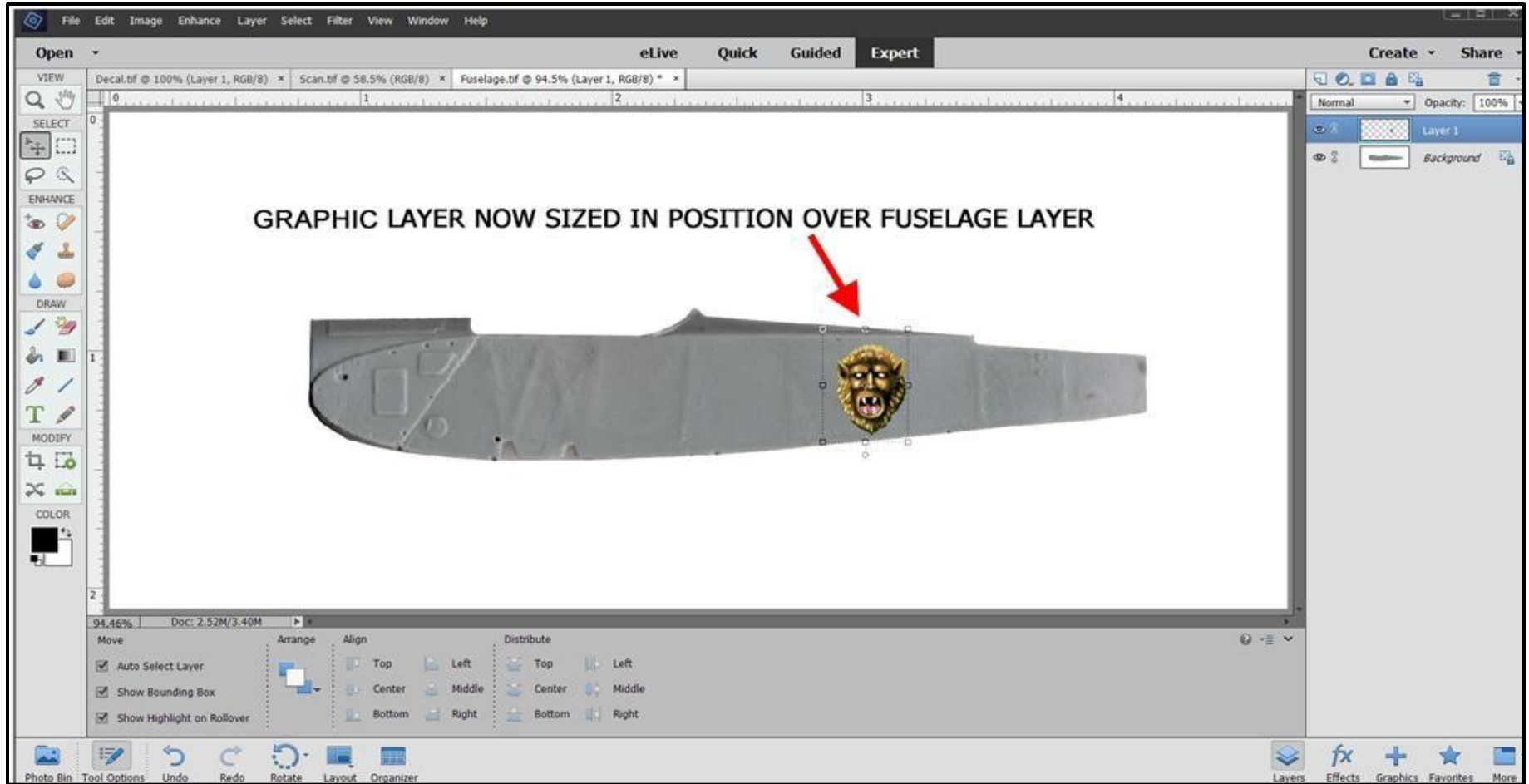
Save Cancel

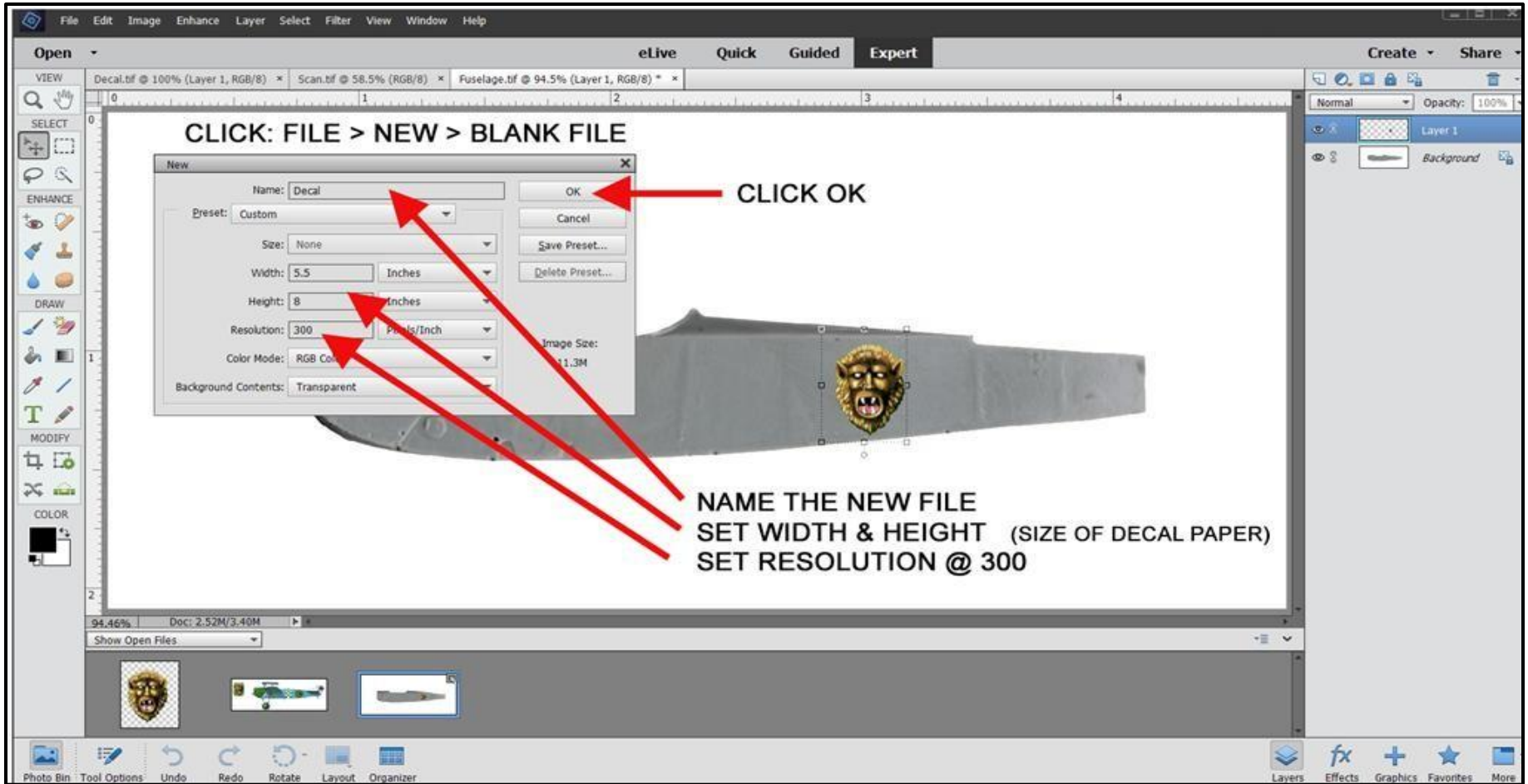








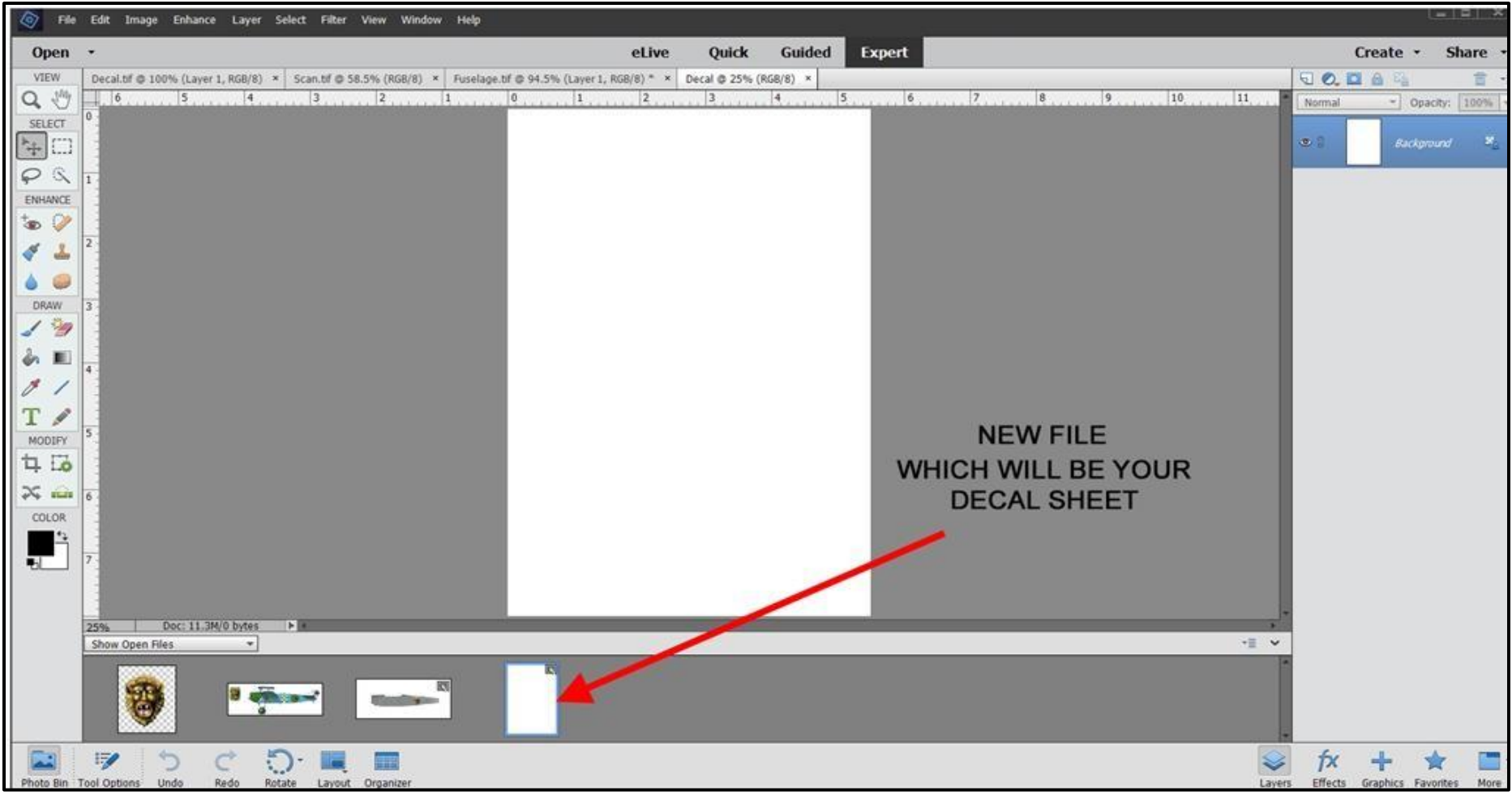




CLICK: FILE > NEW > BLANK FILE

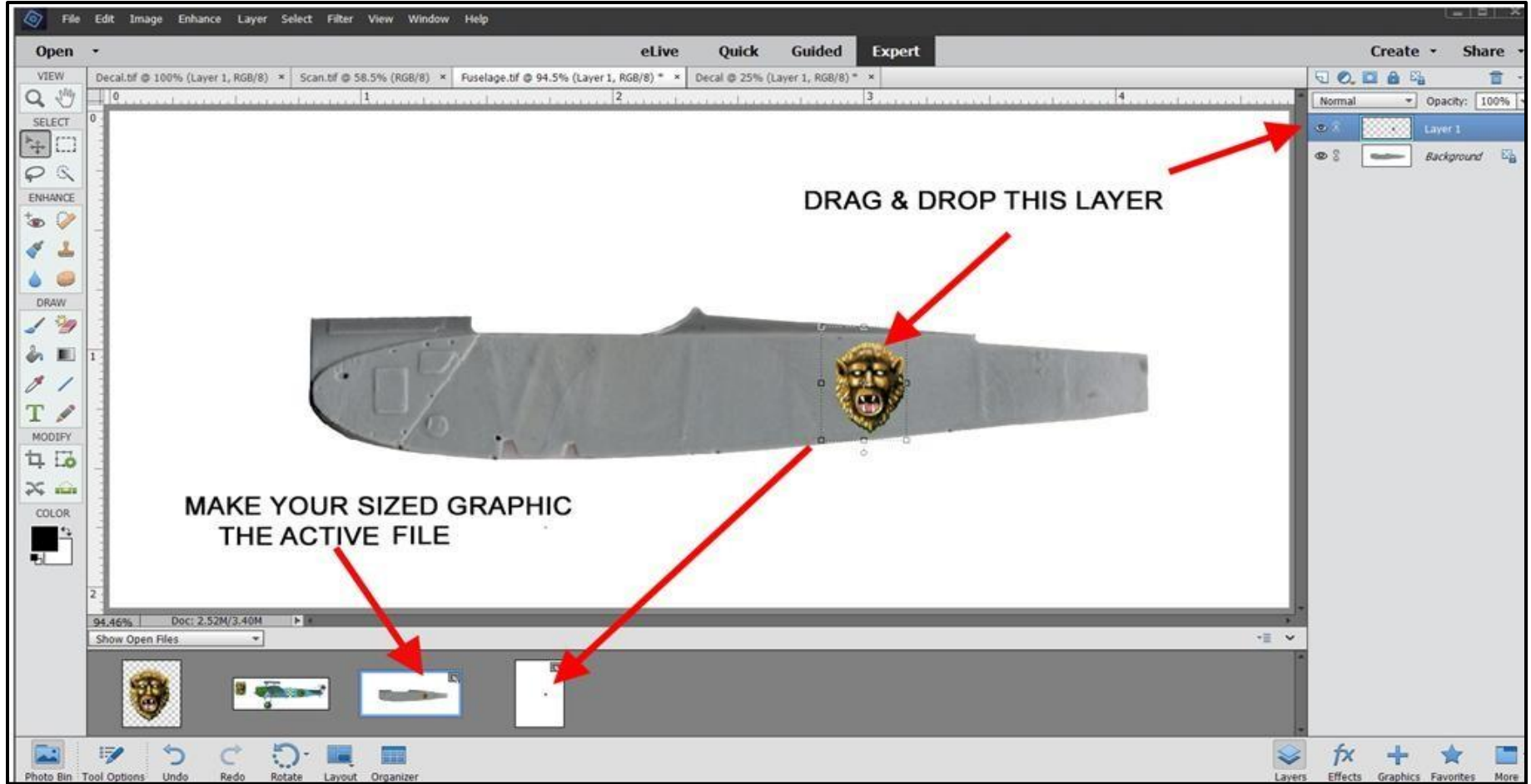
CLICK OK

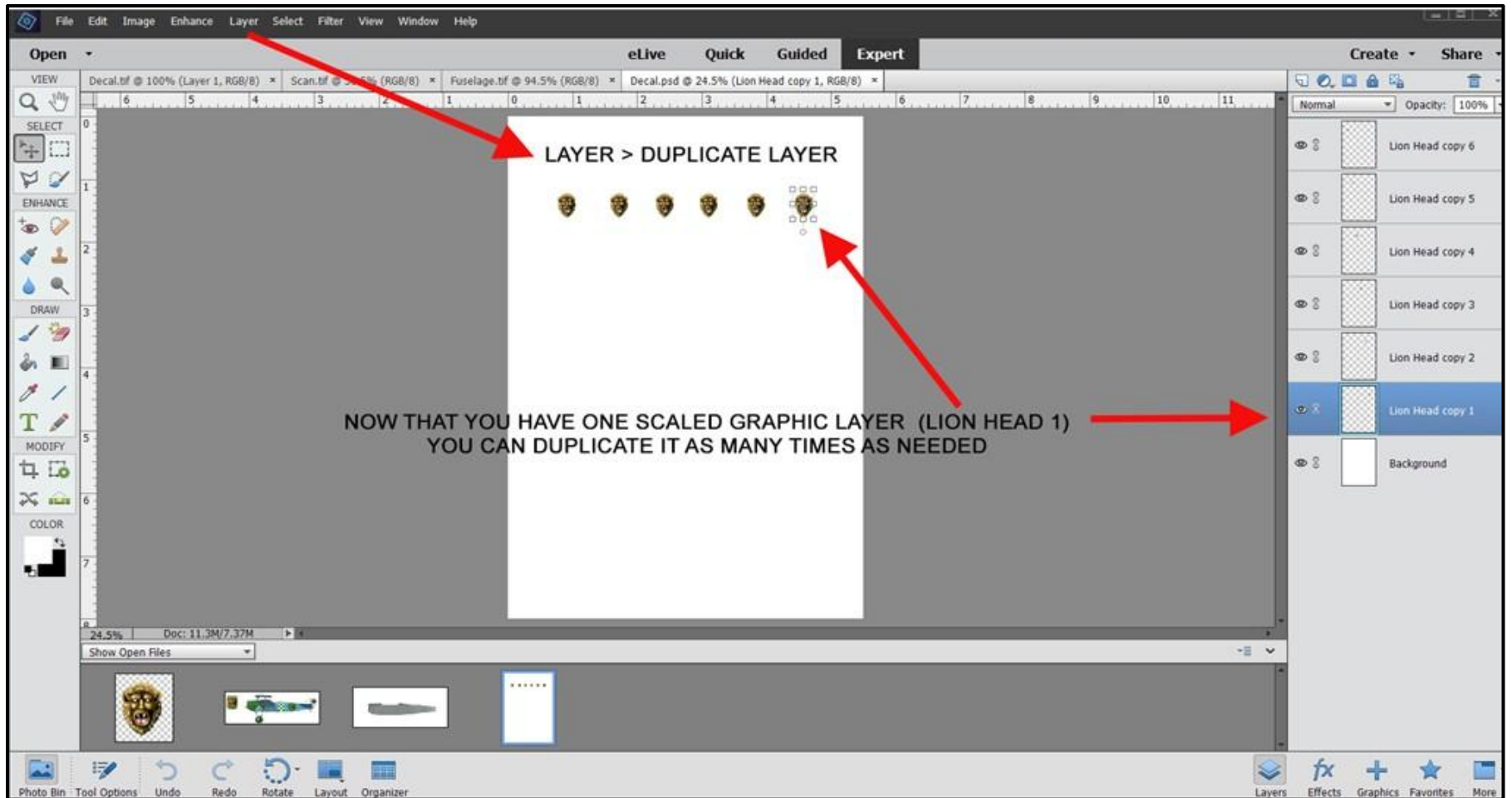
**NAME THE NEW FILE
SET WIDTH & HEIGHT (SIZE OF DECAL PAPER)
SET RESOLUTION @ 300**

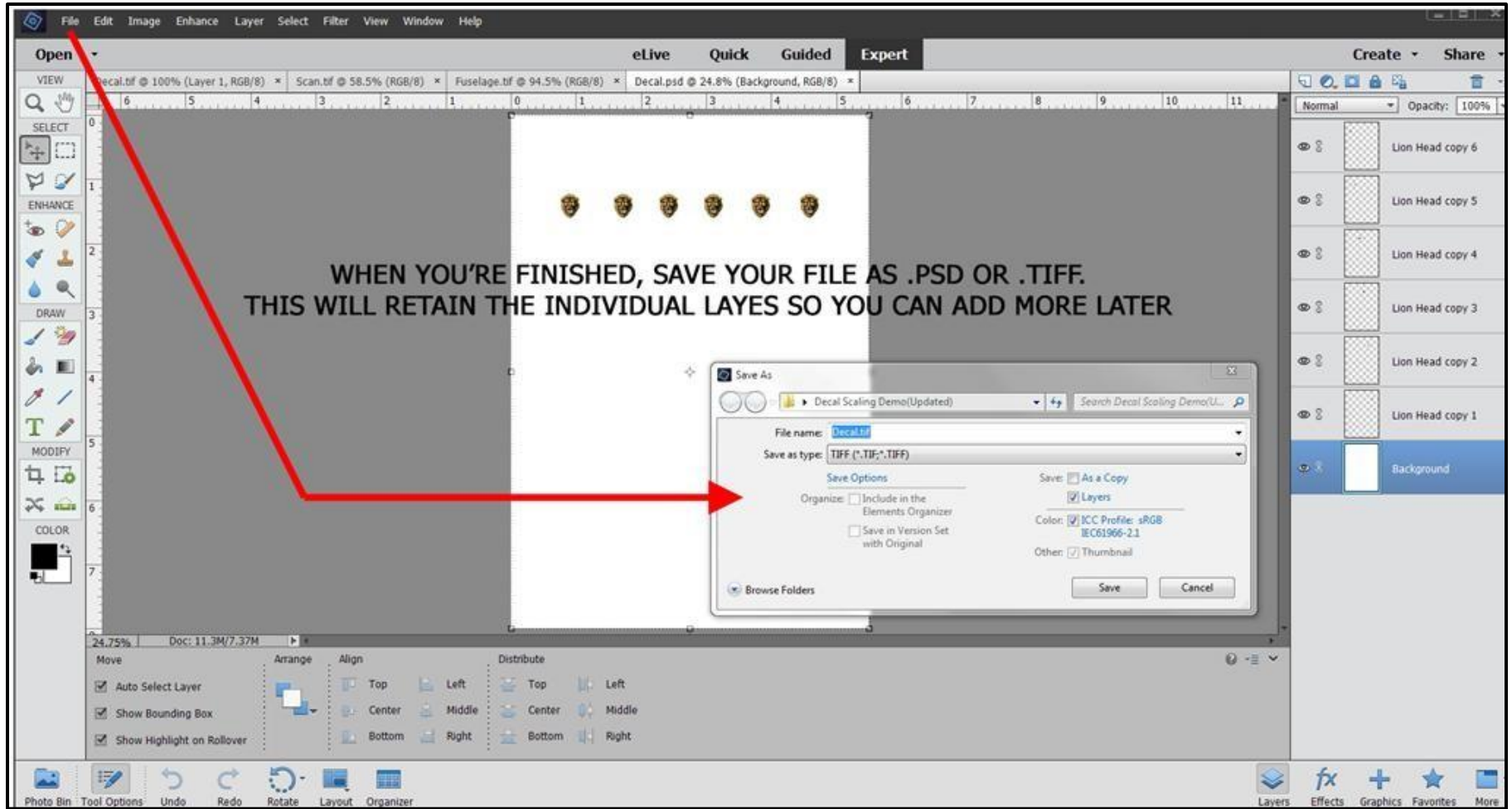


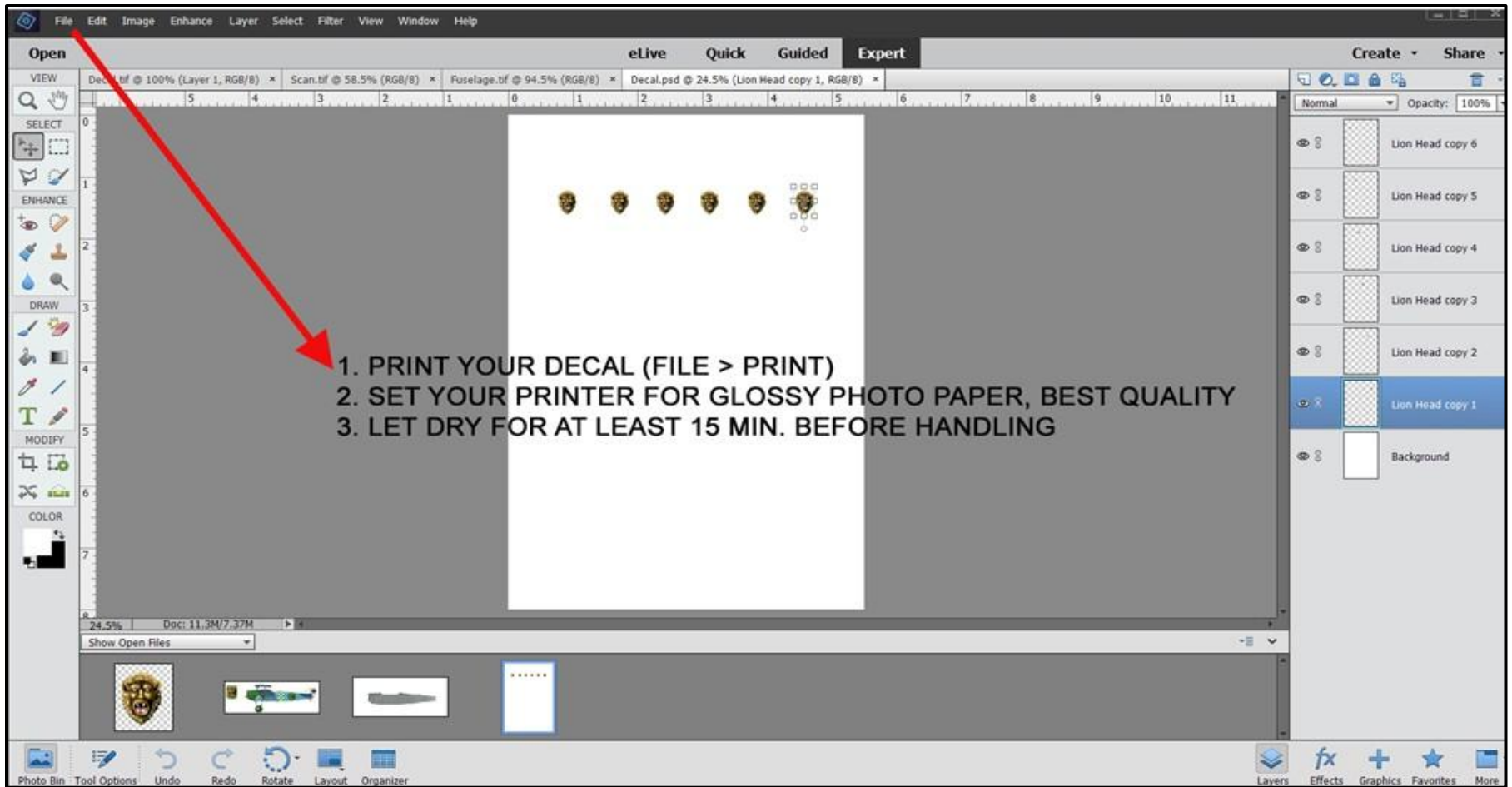
NEW FILE
WHICH WILL BE YOUR
DECAL SHEET





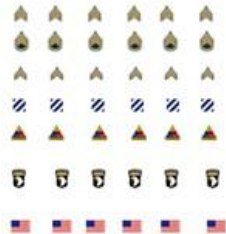






Here's an example of some of the custom markings I have created

UNIFORM INSIGNIA IN 1/72



ARABIC WALL GRAFFITI IN 1/72



MARKINGS FOR 1/72 AMMUNITION CRATES



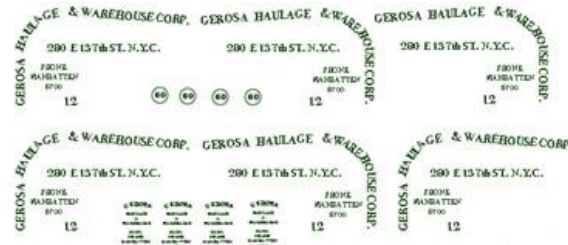
PERSONAL MARKINGS FOR 1/72 M1A2 ABRAMS TANK



1/72 SWEDISH NATIONAL POLICE BELL-47



CUSTOM MARKINGS FOR A SCRATCHBUILT UTILITY TRUCK IN 1/72



PERSONAL MARKINGS FOR 1/72 P-51D



PERSONAL MARKINGS FOR 1/72 ELCO 80' PT BOAT









HAULING
CONTRACTOR

GEROSA
HAULAGE &
WAREHOUSE
CORP.

GEROSA HAULAGE & WAREHOUSE CORP.
290 E 137th ST. N.Y.C.
PHONE
WABMA 1177
8700
12

BERLIN
BERLIN
BERLIN
BERLIN
BERLIN
BERLIN
BERLIN
BERLIN

There is **LIFE**
 behind **THIS WALL**

WE ALL **WISHED**
 The same **COLOR**

There is **LIFE**
 behind **THIS WALL**

WE ALL **WISHED**
 The same **COLOR**

There is **LIFE**
 behind **THIS WALL**

WE ALL **WISHED**
 The same **COLOR**

ACHTUNG!
 VERBODEN DEEN
 BETROFFEN DEKTION

ACHTUNG!
 VERBODEN DEEN
 BETROFFEN DEKTION

ACHTUNG!
 VERBODEN DEEN
 BETROFFEN DEKTION

ACHTUNG!
 VERBODEN DEEN
 BETROFFEN DEKTION

ACHTUNG!
 VERBODEN DEEN
 BETROFFEN DEKTION

ACHTUNG!
 VERBODEN DEEN
 BETROFFEN DEKTION

TOTALE DEMOKRATIE
TOTALE DEMOKRATIE

Nir sind alle Berliner **Nir sind alle Berliner** **Nir sind alle Berliner**

FORGET NOT THE TYRANNY OF THIS WALL NOR THE LOVE OF FREEDOM THAT MADE IT FALL LAID WASTE

FORGET NOT THE TYRANNY OF THIS WALL NOR THE LOVE OF FREEDOM THAT MADE IT FALL LAID WASTE

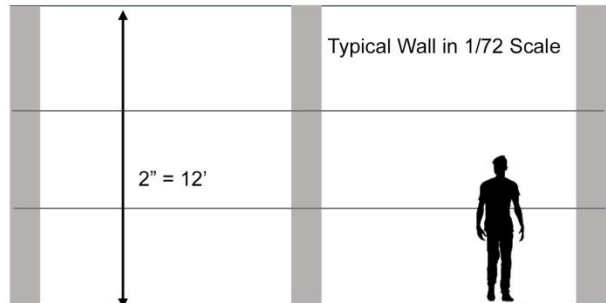
FORGET NOT THE TYRANNY OF THIS WALL NOR THE LOVE OF FREEDOM THAT MADE IT FALL LAID WASTE

ICH BEIN EIN BERLINER
 ICH BEIN EIN BERLINER
 ICH BEIN EIN BERLINER
 ICH BEIN EIN BERLINER

ICH BEIN EIN BERLINER
 ICH BEIN EIN BERLINER



IMAGINE
 IMAGINE
 IMAGINE



There is **LIFE**
 behind **THIS WALL**

There is **LIFE**
 behind **THIS WALL**

Nir sind alle Berliner **Nir sind alle Berliner**

WE ALL **WISHED**
 The same **COLOR**

WE ALL **WISHED**
 The same **COLOR**



HOW TO USE YOUR NEW DECAL

- Print solid color letters/numbers on clear decal
- Print all other graphics on white decal paper to preserve opacity of colors
- Allow to dry for at least 1 hour
- Tape the decal to a flat surface and seal with a few light coats of quality gloss lacquer
- After the decal has dried for at least 1 hour trim closely around the graphic/letter/number with a sharp x-acto blade
- Soak in lukewarm water and slide from backing onto model like any commercially available decal
- There should be no harmful reactions to decal setting products (Microsol/set, Solvaset etc.)but use sparingly to test
- If you printed on white paper you may need to touch up around the edges with background color paint to hid the white decal carrier edges

That's All Folks



Thanks and have Fun